

odcinek  
okolo 600 [m]

Mastoš Drug  
ul. Panoramická

395 R-IV

R 603 R-IV

R 585 R-IV

R 585 R V

R 582 R-IV

R 587 E-IV

R 584 E V

R 584 R-IV

R 582 E IV

R 353 E IV

R 596 R-IV

R 588 R V

R 588 R-V

R 582 R-V

R 587 R-IV

R 595 R-V

R 594 R-IV

R 599 R-V

R 581

R 594 R-IV

R 591 R-IV

R 597 R-V

R 592 R-V

R 678 R-IV

R 592 R-IV

R 676 R-IV

R 676 R-IV

R 676 R-IV

R 676 R-IV

R 676 R-IV



Ladanie nr 4  
Wola Okpowska  
ul. Rotana  
ul. Jaśminowa

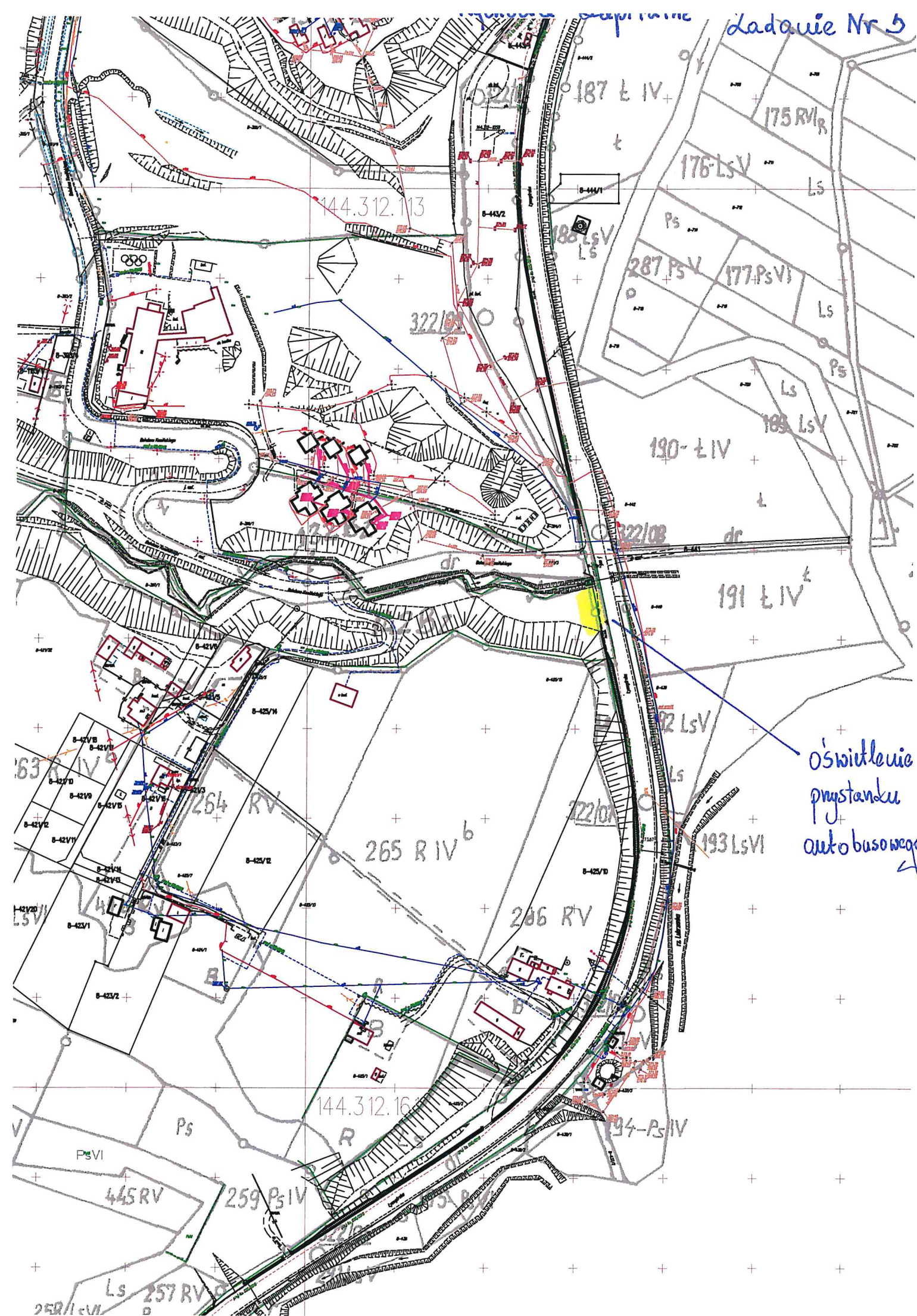


odcinek  
około  
290[m]

11-360/6, 11-360/4, 11-362/17, 11-362/18, 11-362/19, 11-362/20, 11-362/21, 11-362/10, 11-362/11, 11-362/12, 11-362/2, 11-362/3, 11-362/4, 11-362/1, 11-361/2, 11-361/3, 11-361/5, 11-361/9, 11-361/8, 11-360/9, 11-445/6, 11-445/7, 11-445/12, 11-445/10, 11-445/11, 11-445/5, 11-445/4, 11-445/1, 11-445/2, 11-445/3, 11-445/4, 11-445/5, 11-445/6, 11-445/7, 11-445/8, 11-445/9, 11-443/4, 11-446, 11-447, 11-448, 11-449, 11-450, 11-451, 11-452, 11-453, 11-454, 11-455, 11-456, 11-457, 11-458, 11-459, 11-460, 11-461, 11-462, 11-463, 11-464, 11-465, 11-466, 11-467, 11-468, 11-469/3, 11-469/4, 11-469/5, 11-469/6, 11-469/7, 11-469/8, 11-387, 11-388, 11-389, 11-390, 11-391, 11-401/22, 11-401/9, 11-401/10, 11-401/11, 11-401/13, 11-401/23, 11-402/15, 11-470/1, 11-470/2, 11-470/3, 11-471/7, 11-471/8, 11-471/3, 11-471/6, 11-471/4, 11-471/9, 11-471/5, 11-471/1, 11-471/2, 11-471/3, 11-471/4, 11-471/5, 11-471/6, 11-471/7, 11-471/8, 11-471/9, 11-471/10, 11-471/11, 11-471/12, 11-471/13, 11-471/14, 11-471/15, 11-471/16, 11-471/17, 11-471/18, 11-471/19, 11-471/20, 11-471/21, 11-471/22, 11-471/23, 11-471/24, 11-471/25, 11-471/26, 11-471/27, 11-471/28, 11-471/29, 11-471/30, 11-471/31, 11-471/32, 11-471/33, 11-471/34, 11-471/35, 11-471/36, 11-471/37, 11-471/38, 11-471/39, 11-471/40, 11-471/41, 11-471/42, 11-471/43, 11-471/44, 11-471/45, 11-471/46, 11-471/47, 11-471/48, 11-471/49, 11-471/50, 11-471/51, 11-471/52, 11-471/53, 11-471/54, 11-471/55, 11-471/56, 11-471/57, 11-471/58, 11-471/59, 11-471/60, 11-471/61, 11-471/62, 11-471/63, 11-471/64, 11-471/65, 11-471/66, 11-471/67, 11-471/68, 11-471/69, 11-471/70, 11-471/71, 11-471/72, 11-471/73, 11-471/74, 11-471/75, 11-471/76, 11-471/77, 11-471/78, 11-471/79, 11-471/80, 11-471/81, 11-471/82, 11-471/83, 11-471/84, 11-471/85, 11-471/86, 11-471/87, 11-471/88, 11-471/89, 11-471/90, 11-471/91, 11-471/92, 11-471/93, 11-471/94, 11-471/95, 11-471/96, 11-471/97, 11-471/98, 11-471/99, 11-471/100



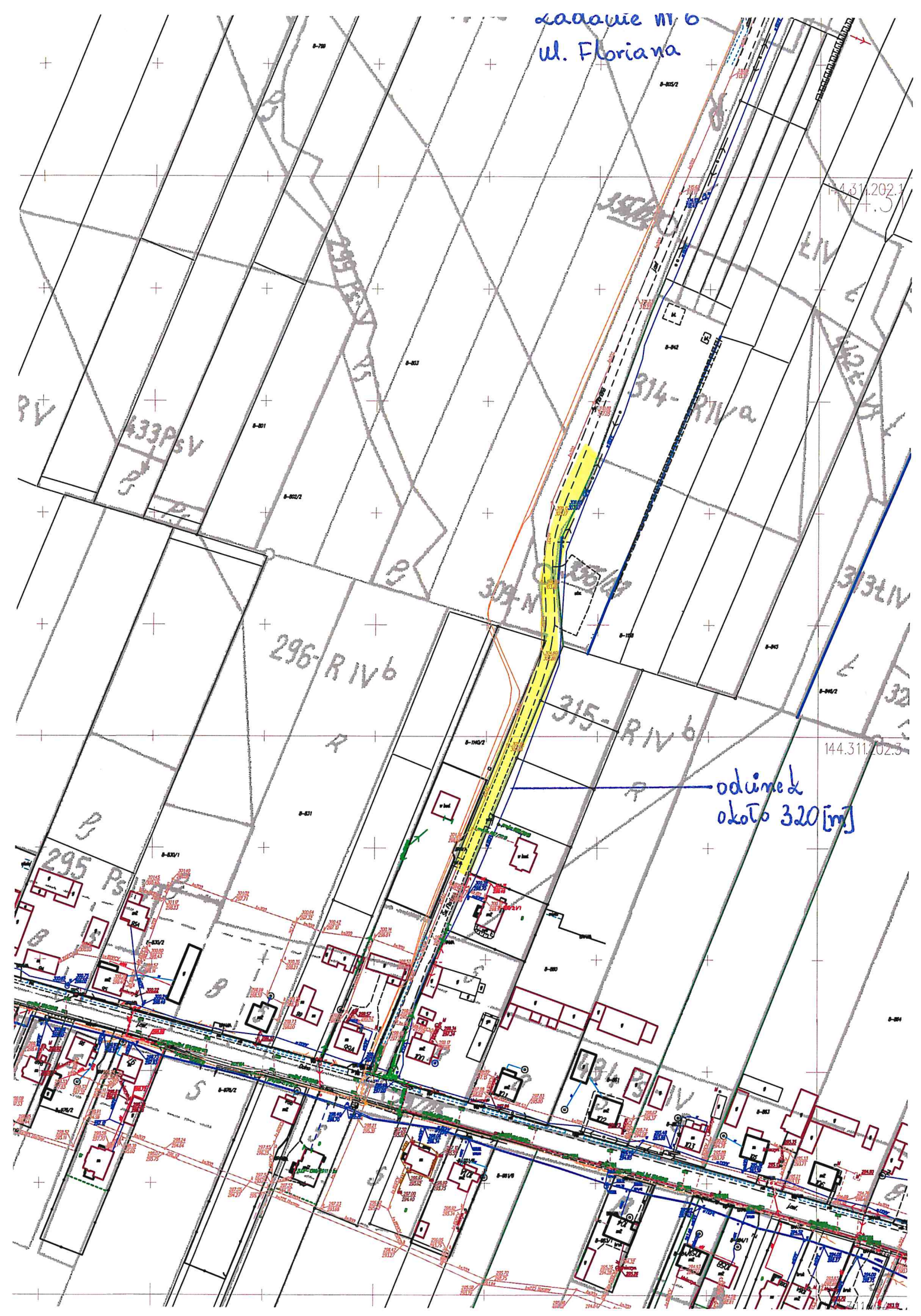
Ładanie Nr 5



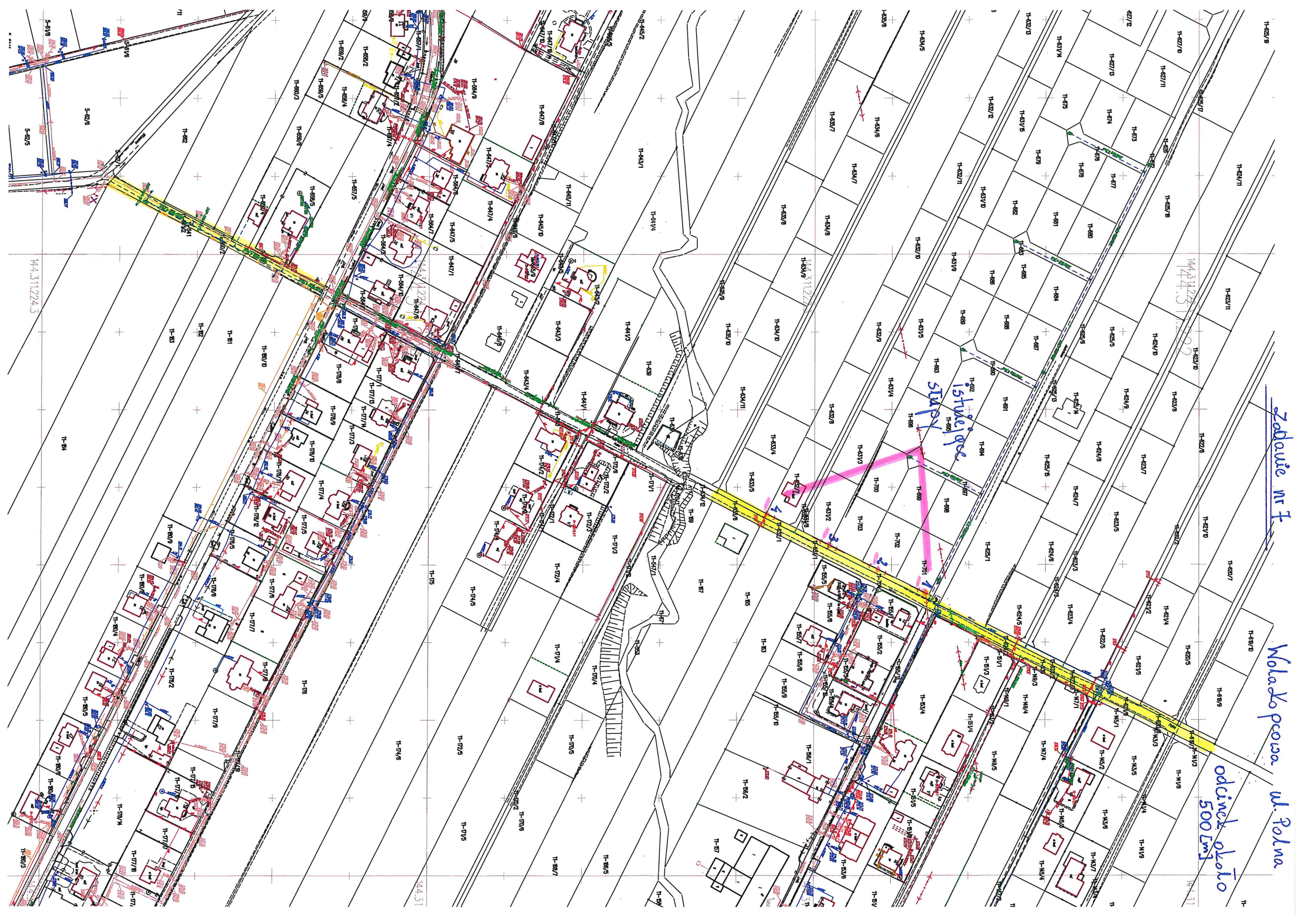
oświetlenie  
przystanku  
autobusowego



zadanie nr 6  
ul. Floriana







Zabauie nr 7

Molako pccisa u. Polna

odinec okolo 500 [m]

stupa

144.311224.3

144.311224.3

144.31



Zadanie nr 8  
Maszow Pierwszy  
ul. Spokojna

odcinek około 650 m

